

Standard specifications

PST500-H1H

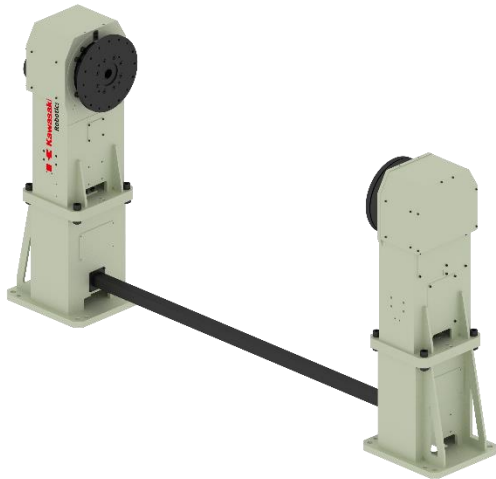
1st Edition: May 25, 2018

KAWASAKI HEAVY INDUSTRIES, LTD.

ROBOT DIVISION

DESIGNED AND MANUFACTURED BY ASTOR LTD.

1. Specification of positioner



- General purpose single axis positioner,
- Horizontal rotating axis,
- Used as an external axis with Kawasaki robots (E0x controller),
- Based on Kawasaki components and according to Kawasaki standards,
- Simple/modular body design,
- Hollow shaft – for a direct supply of energy and fluids,
- Pedestal for adjusting height of the flange surface,
- Abutment with pedestal (increase stability),
- Lightweight.

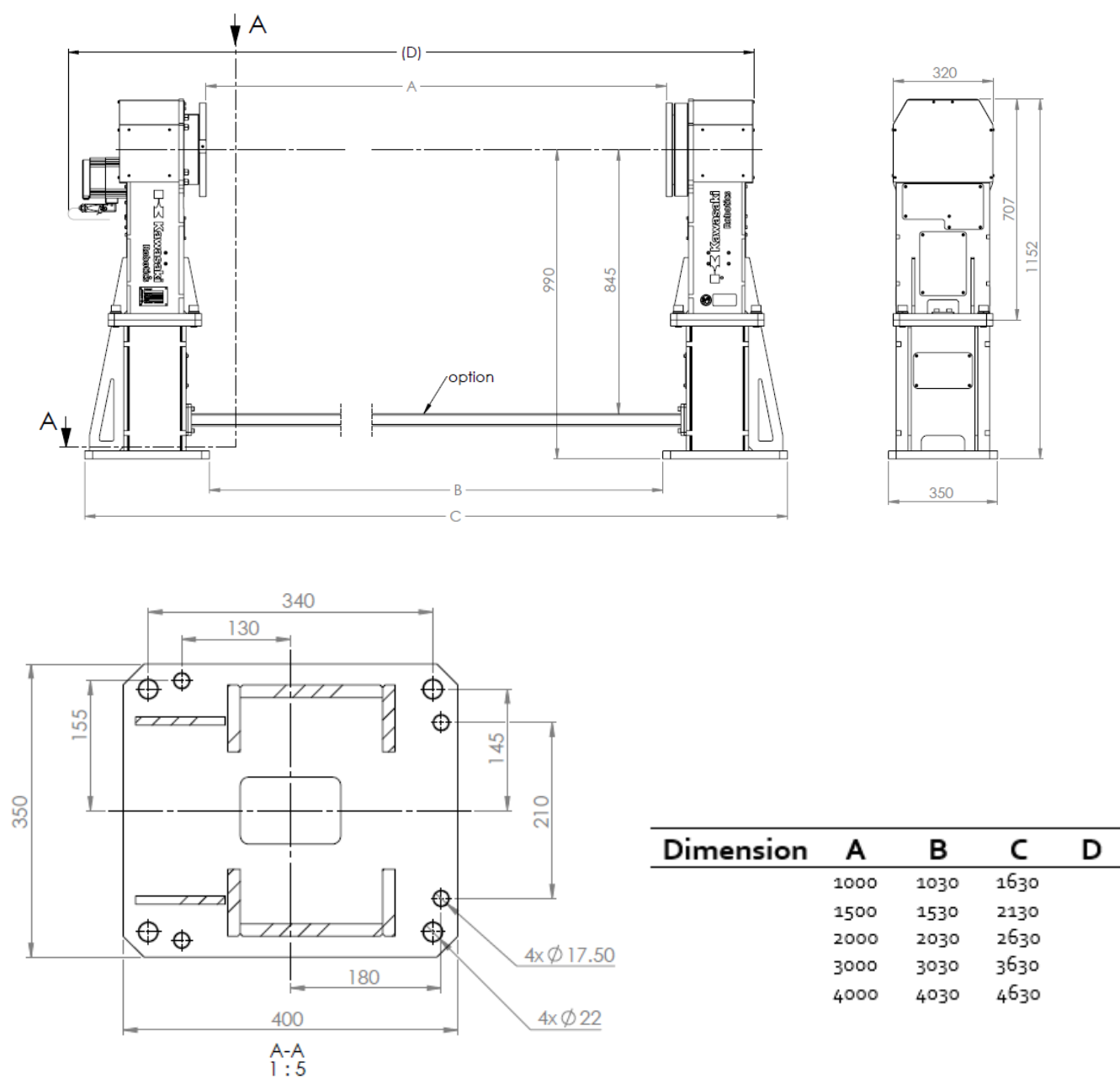
2. Technical parameters

Model	PST500-H1H
Max. payload	500 kg
Degree of freedom	1 axis
Nominal torque	490 Nm
Max. torque	1200 Nm
Max. tilting torque	1450 Nm
Turning range	+/-360°*
Max. rotating speed	150°/s
Repeatability	±0.05 mm**
Max. offset COG from rotating axis JT1	100 mm
Max. mass moment of inertia	192 kgm ²
Mass	375 kg
Default height of rotating axis	990 mm
Installation	Floor
Color	NCS S 0510-G50Y & RAL9011
Built-in utilities	Welding ground transfer system
Nominal weld current – 100% duty cycle	500 A
Environment cond.	0÷40°C (Humidity) 35÷85%, no dew

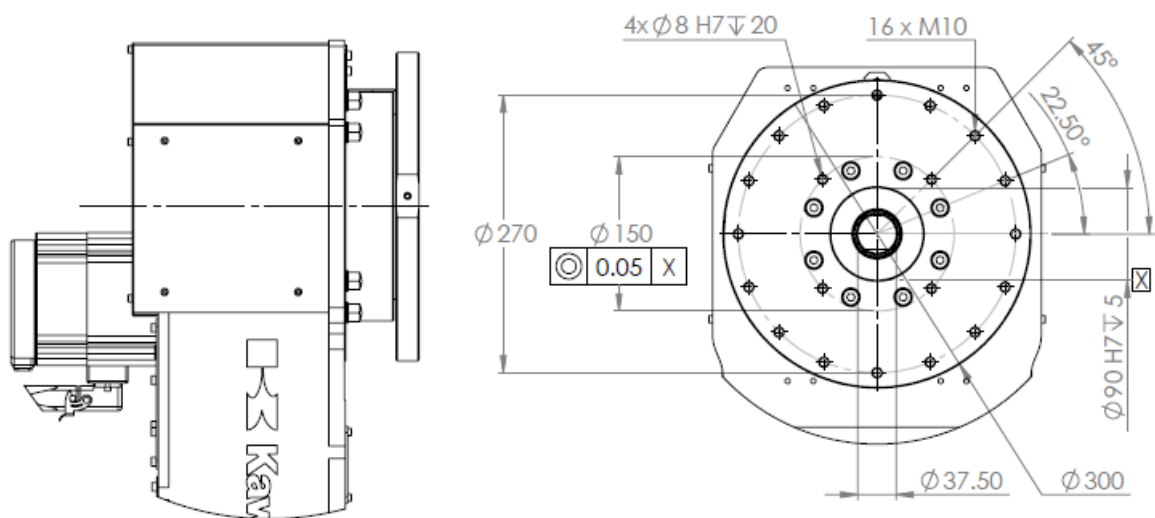
*possibility of setup range +/-36000

**on radius r=340mm from rotating axis

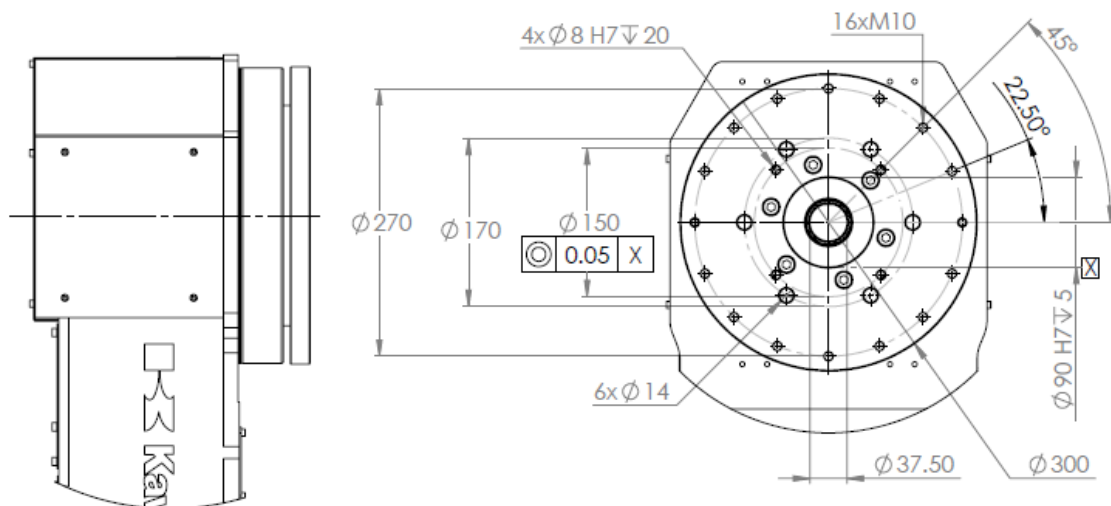
3. Dimensions



The backing plate of the two bases is symmetrical.



Flange motor



Flange support