

Standard specifications

PST750-H1H

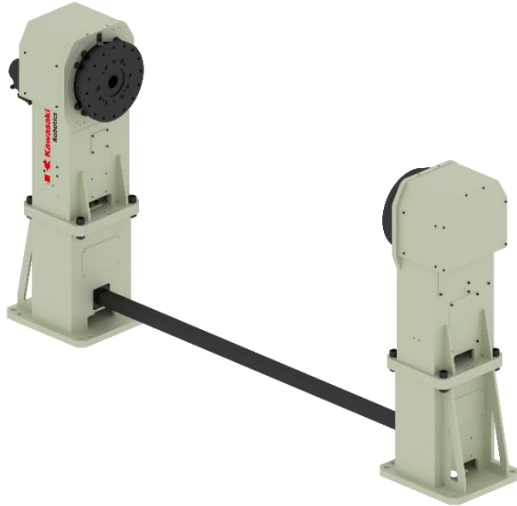
1st Edition: May 25, 2018

KAWASAKI HEAVY INDUSTRIES, LTD.

ROBOT DIVISION

DESIGNED AND MANUFACTURED BY ASTOR LTD.

1. Specification of positioner



- General purpose single axis positioner,
- Horizontal rotating axis,
- Used as an external axis with Kawasaki robots (E0x controller),
- Based on Kawasaki components and according to Kawasaki standards,
- Simple/modular body design,
- Hollow shaft – for a direct supply of energy and fluids,
- Pedestal for adjusting height of the flange surface,
- Abutment with pedestal (increase stability),
- Lightweight.

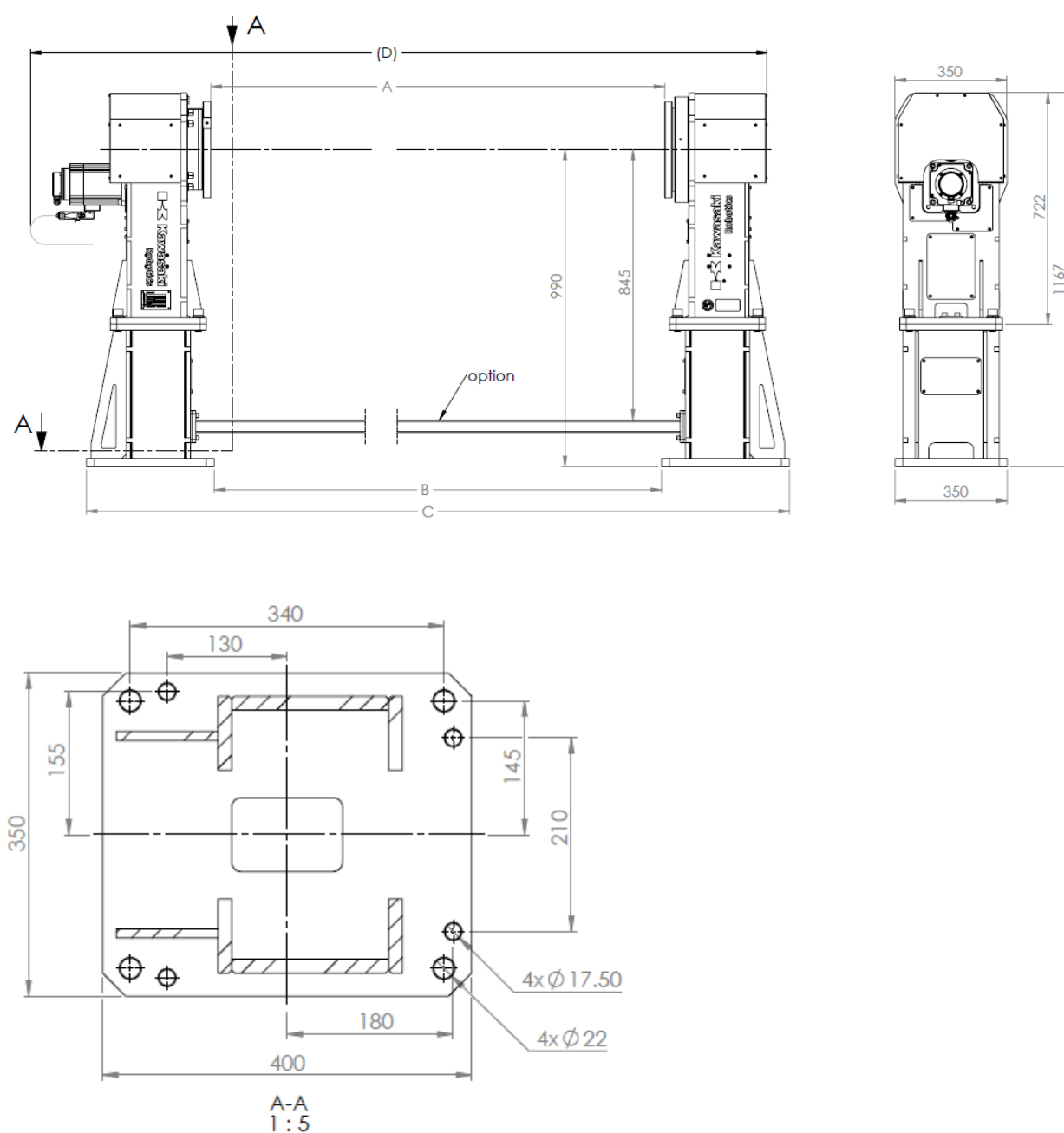
2. Technical parameters

Model	PST750-H1H
Max. payload	750 kg
Degree of freedom	1 axis
Nominal torque	950 Nm
Max. torque	2450 Nm
Max. tilting torque	1750 Nm
Turning range	+/-360°*
Max. rotating speed	150°/s
Repeatability	±0.05 mm**
Max. offset COG from rotating axis JT1	130 mm
Max. mass moment of inertia	192 kgm ²
Mass	420 kg
Default height of rotating axis	990 mm
Installation	Floor
Color	NCS S 0510-G50Y & RAL9011
Built-in utilities	Welding ground transfer system
Nominal weld current – 100% duty cycle	500 A
Environment cond.	0÷40°C (Humidity) 35÷85%, no dew

*possibility of setup range +/-36000

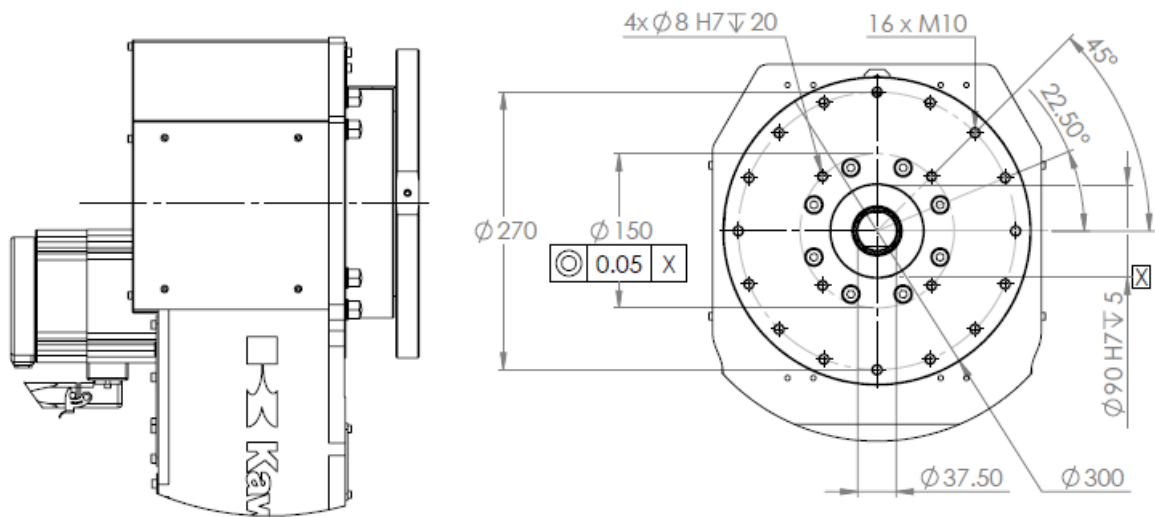
**on radius r=340mm from rotating axis

3. Dimensions

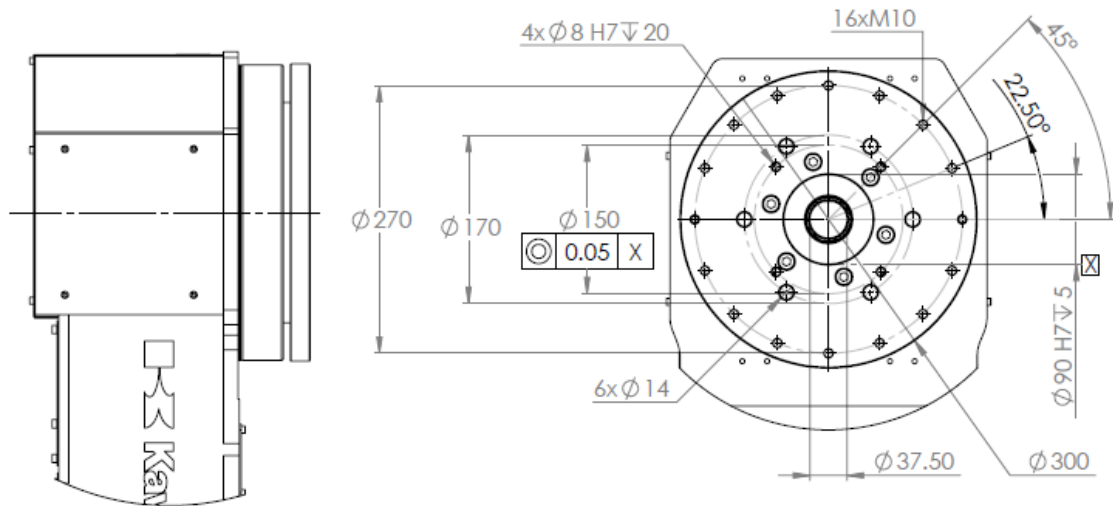


The backing plate of the two bases is symmetrical.

Dimension	A	B	C	D
1000	1030	1630		
1500	1530	2130		
2000	2030	2630		
3000	3030	3630		
4000	4030	4630		



Flange motor



Flange support