

# **Standard specifications**

## **PST250-F2**

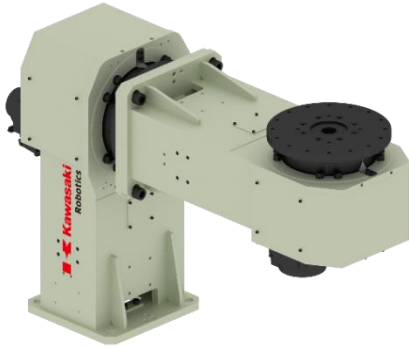
1st Edition: May 25, 2018

KAWASAKI HEAVY INDUSTRIES, LTD.

ROBOT DIVISION

DESIGNED AND MANUFACTURED BY ASTOR LTD.

## 1. Specification of positioner



- General purpose double axis positioner,
- Horizontal rotating axis + Vertical rotating axis,
- Used as an external axis with Kawasaki robots (E0x controller),
- Based on Kawasaki components and according to Kawasaki standards,
- Simple/modular body design,
- Hollow shaft – for a direct supply of energy and fluids,
- Lightweight.

## 2. Technical parameters

Model	PST250-F2
Max. payload	250 kg
Degree of freedom	2 axis
Nominal torque JT1	920 Nm
Max. torque JT1	2450 Nm
Nominal torque JT2	490 Nm
Max. torque JT2	1200 Nm
Turning range JT1	+/-180°
Turning range JT2	+/-360°*
Max. rotating speed JT1	150°/s
Max. rotating speed JT2	150°/s
Repeatability	±0.05 mm*
Max. offset COG from rotating axis JT2	100 mm
Max. offset COG from flange surface	200 mm
Max. mass moment of inertia JT1	325 kgm <sup>2</sup>
Max. mass moment of inertia JT2	192 kgm <sup>2</sup>
Mass	286 kg
Default height of rotating axis JT1	709 mm
Installation	Floor
Color	NCS S 0510-G50Y & RAL9011
Built-in utilities	Welding ground transfer system
Nominal weld current – 100% duty cycle	500 A
Environment cond.	0÷40°C (Humidity) 35÷85%, no dew

\*on radius r=340mm from rotating axis

### 3. Dimensions

