

# **Standard specifications**

## **PST125**

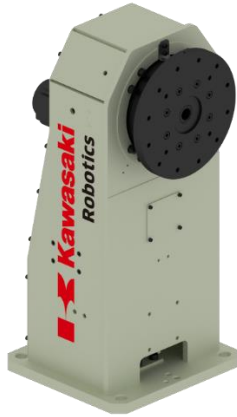
1st Edition: May 25, 2018

KAWASAKI HEAVY INDUSTRIES, LTD.

ROBOT DIVISION

DESIGNED AND MANUFACTURED BY ASTOR LTD.

## 1. Specification of positioner



- General purpose single axis positioner,
- Horizontal rotating axis,
- Used as an external axis with Kawasaki robots (E0x controller),
- Based on Kawasaki components and according to Kawasaki standards,
- Simple/modular body design,
- Hollow shaft – for a direct supply of energy and fluids,
- Lightweight.

## 2. Technical parameters

<b>Model</b>	<b>PST125</b>
Max. payload	125 kg
Degree of freedom	1 axis
Nominal torque	265 Nm
Max. torque	660 Nm
Max. tilting torque	850 Nm
Turning range	+/-360°*
Max. rotating speed	180°/s
Repeatability	±0.05 mm**
Max. offset COG from rotating axis	200 mm
Max. mass moment of inertia	80 kgm <sup>2</sup>
Mass	80 kg
Default height of rotating axis	545 mm***
Installation	Floor
Color	NCS S 0510-G50Y & RAL9011
Built-in utilities	Welding ground transfer system
Nominal weld current – 100% duty cycle	500 A
Environment cond.	0÷40°C (Humidity) 35÷85%, no dew

\*possibility of setup range +/-36000

\*\*on radius r=340mm from rotating axis

\*\*\* the possibility of mounting on a pedestal

### 3. Dimensions

